

# ADRV2CRR-FMC

## ADRV9009-ZU11EG Evaluation Carrier Board

### Product Overview

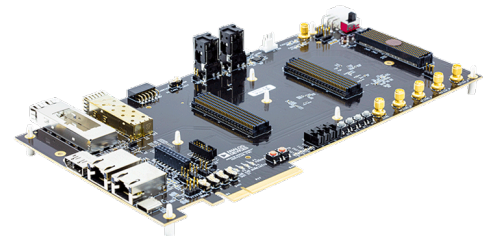
07-09-2021

For the most up-to-date information, visit [www.mouser.com](http://www.mouser.com) or the supplier's website.

## Description

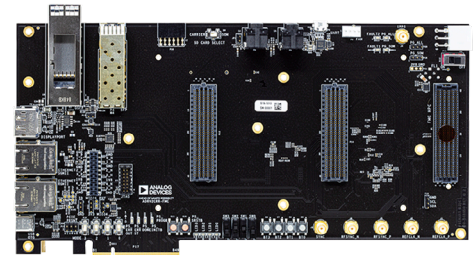
Analog Devices Inc. ADRV2CRR-FMC Carrier Board designed to evaluate the [ADRV9009-ZU11EG RF-SOM](#).

The [AD-FMCOMMS8-EBZ](#) is an additional RF board that can be fitted to the carrier to further expand the system up to eight TX and RX radio channels. The Carrier Board comes with a power supply that power up the full system, a heatsink that the user fits to the RF-SOM heat spreader plate and necessary cables and adapters to get up and running.

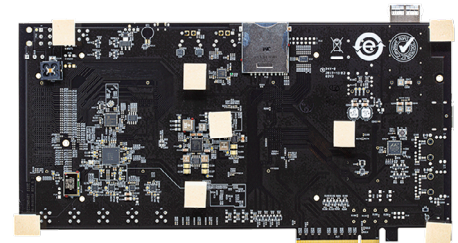


## Features

- Designed to develop custom carrier or system boards
- Additional RF board can be fitted to the carrier to further expand the system up to 8 TX and RX radio channels
- Carrier board for prototyping with the ADRV9009-ZU11EG(RF-SOM) and AD-FMCOMMS8-EBZ
- 2x 400-pin FMC sockets for connecting to the RF-SOM
- 1x 400pin HPC FMC connector to connect compatible expansion board, Eg. AD-FMCOMMS8-EBZ
- Data connectivity options:
  - 1Gbps Ethernet x2, USB3.0, PCIe Gen3 x8, SFP+, and QSFP+
  - Check on the further documentation link for the software functionality provided across the different interfaces
- Other I/O:
  - DisplayPort, SD card holder, PMOD, USB UART, audio In/Out, fan, JTAG, status LED's, power and config switches
- System clocking inputs:
  - EXT REFCLK, SYNC In, and 1PPS

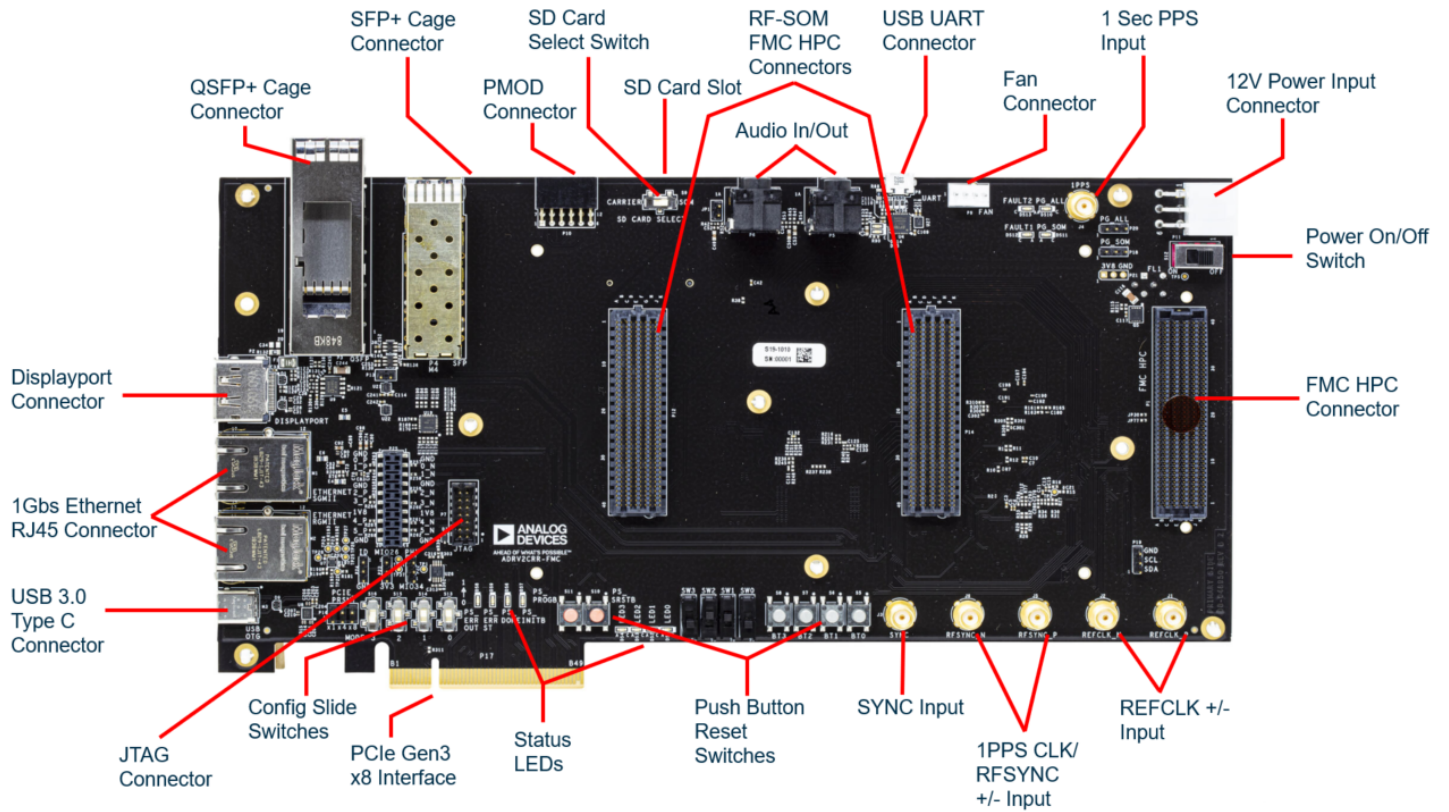


ADRV2CRR-FMC - Top View



ADRV2CRR-FMC - Bottom View

## Hardware Overview



## Mouser Part Number(s)

[ADRV2CRR-FMC](#)

To learn more, visit <https://www.mouser.com/new/analog-devices/adi-adv2crr-fmc-board/>