

# SPDT Coaxial Switches

, Coaxial Switches , SPDT , K , Latching , 12VDC , TTL , DC to 26.5 GHz , -55°Cto +85°C , 4 Pin(2.54mm)

## Electrical Characteristics:

Parameter	Condition
Frequency range	DC-26.5GHz
Impedance	50 Ω
Operation mode	Latching
Switch sequence	Break before make
Switching time	15 ms max
Mechanical life	5 million min
TTL input	0-0.8 V(OFF), 2.4-5 V(ON)
Rated voltage	12 VDC
Operating current at 23 °C	200 mA



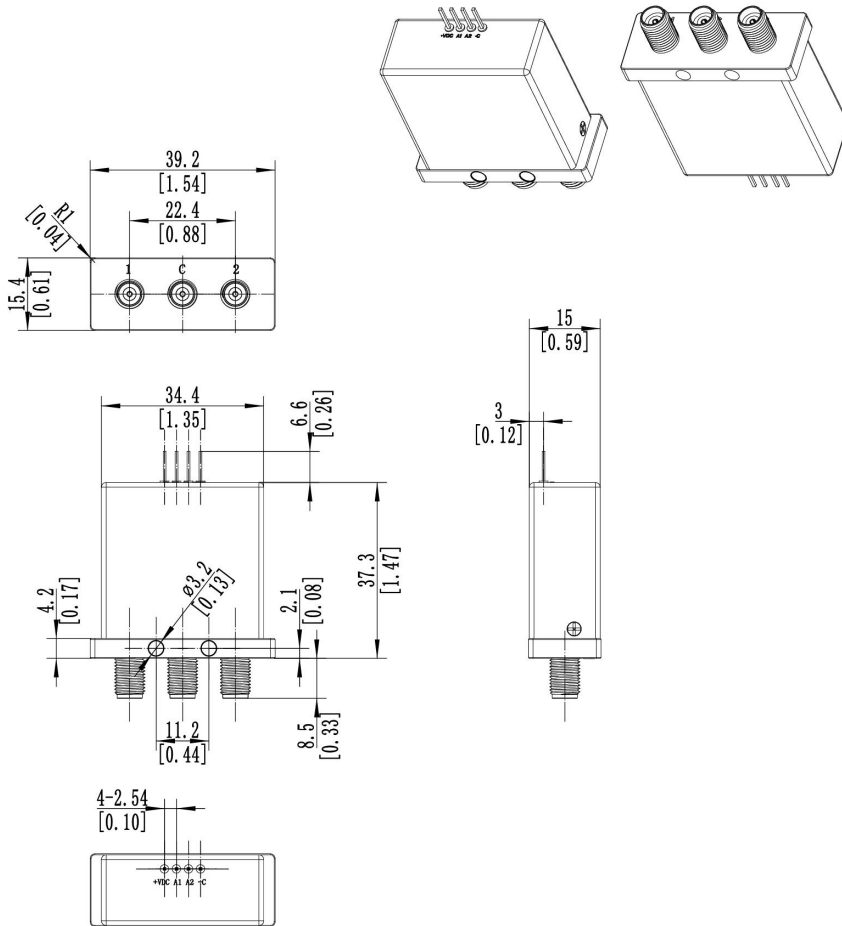
## RF Specifications:

FREQUENCY RANGE(GHz)	DC-6	6-12	12-18	18-26.5
INSERTION LOSS (MAX) dB	0.2	0.25	0.4	0.7
ISOLATION (MIN) dB	70	70	60	55
V.S.W.R. (MAX)	1.2:1	1.3:1	1.4:1	1.7:1

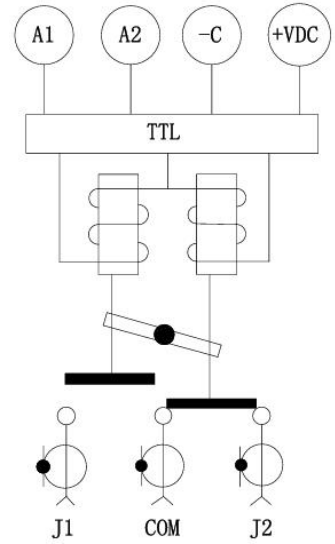
## Environmental And Physical Characteristics:

Parameter	条件 Condition
Operating temperature range	-55°C to +85°C
Sine vibration(Operating)	20-2000Hz , 10g
Shocks(Non Operating)	50g / 12ms, ½ine
RF Connector type	2.92 Female
Control connector	4 Pin(2.54mm)
Weight	50g Max

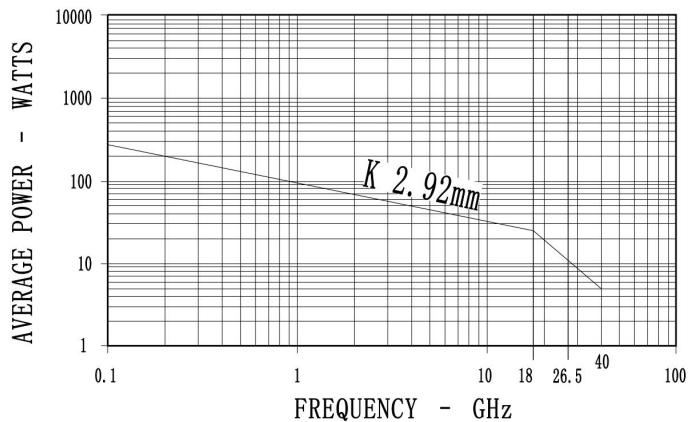
**Outline Drawing:** Unit: mm



**Schematic:**



**Average power:**



This graph is based on the following conditions:

- Ambient temperature: + 25 °C
- Sea level
- V.S.W.R.: 1 and cold switching