

# SPDT Coaxial Switches

, Coaxial Switches , SPDT , K , Latching , 24VDC , TTL , DC to 40 GHz , -55°C to +85°C , 4 Pin(2.54mm)

## Electrical Characteristics:

Parameter	Condition
Frequency range	DC-40GHz
Impedance	50 Ω
Operation mode	Latching
Switch sequence	Break before make
Switching time	15 ms max
Mechanical life	5 million min
TTL input	0-0.8 V(OFF), 2.4-5 V(ON)
Rated voltage	24 VDC
Operating current at 23 °C	90 mA



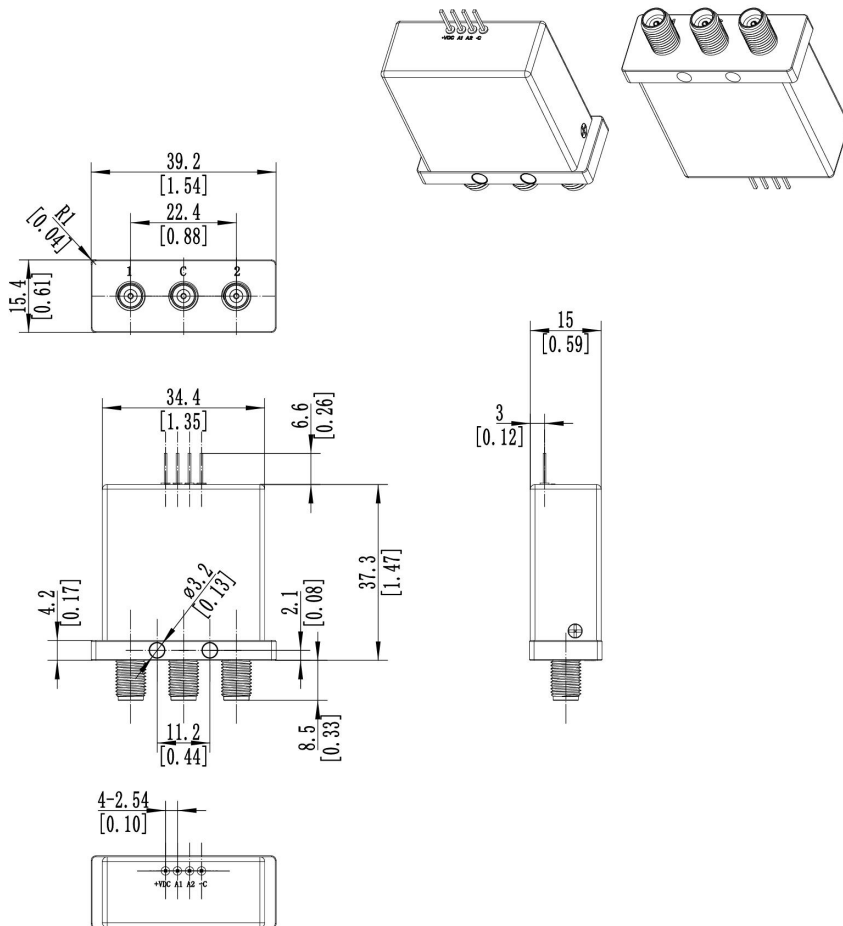
## RF Specifications:

FREQUENCY RANGE(GHz)	DC-6	6-12	12-18	18-26.5	26.5-32	32-40
INSERTION LOSS (MAX) dB	0.2	0.25	0.4	0.7	0.8	1.0
ISOLATION (MIN) dB	70	70	60	55	50	50
V.S.W.R. (MAX)	1.2:1	1.3:1	1.4:1	1.7:1	1.9:1	2.0:1

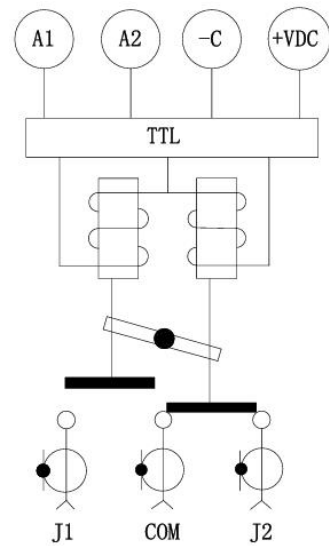
## Environmental And Physical Characteristics:

Parameter	Condition
Operating temperature range	-55°C to +85°C
Sine vibration(Operating)	20-2000Hz , 10g
Shocks(Non Operating)	50g / 12ms, ½ine
RF Connector type	2.92 Female
Control connector	4 Pin(2.54mm)
Weight	50g Max

### Outline Drawing: Unit: mm



### Schematic:



### Average power:

This graph is based on the following conditions:

- Ambient temperature: + 25 °C
- Sea level
- V.S.W.R.: 1 and cold switching

